

Bird River Watershed

The Bird River Watershed drains 26 square miles on 16,408 acres, including 90 miles of streams and 16 miles of coastline within 8 sub-watersheds. Unfortunately many streams in the watershed receive high volumes of storm water runoff that causes excess sedimentation and erosion and excess nutrients. Many streams also experience problems with trash, sewage and septic leaks, and toxic materials dumped into storm drains. How much do you know about the source of this pollution?

True or False?

Items or liquids that flow into a nearby storm drain enter a treatment facility or the sewer pipes and are cleaned before the flow into a nearby creek and our waterways.

False! False! False!

Anything that ends up in the gutter enters a storm drain and goes directly into the closest waterway unfiltered. Then it flows into bigger creeks or rivers, which then flow directly into the Chesapeake Bay!

The bottom line: By dumping trash, liquids, pet waste, grass, leaves, or anything else into nearby storm drains, we are contributing to the pollution of our creeks and the Chesapeake Bay.

However—we can restore our clean water heritage by adopting a creek and encouraging others to do the same.

"See Your Feets In Our Creeks"

The Clear Creeks Project is a grant-funded, citizen-based initiative that helps answer a community desire to restore the water quality of the rivers and creeks that comprise the Bird River Watershed. Through educational outreach and hands-on efforts, the Gunpowder Valley Conservancy (GVC) and its community partners will assist residents in creek clean-ups, tree plantings, and yard and garden installations all designed to proudly maintain the health and heritage of our treasured Chesapeake waterways.



www.clearcreeks.org
www.gunpowderfalls.org
Gunpowder Valley Conservancy
P.O. Box 9733
Towson, MD 21284
410-692-0468

This brochure was created by GVC. The Clear Creeks Project is funded by the National Fish and Wildlife Foundation, Chesapeake Bay Trust, Baltimore County Dept. of Environmental Protection and Sustainability, BGE, and the MD Dept. of Natural Resources.



If you'd like to adopt a creek or for more information please contact us:

Peggy Perry
Clear Creeks Project Manager
pperry@gunpowderfalls.org

Chris Potts
Clear Creeks Assistant Project Manager
gvcchris@aol.com

Protect the Bird River
Watershed

Stream Watch Program: Adopt a Creek



The Gunpowder Valley Conservancy is searching for volunteers for the Adopt-a-Creek program for the Bird River Watershed. Adult volunteers and families are needed who live, work, or play close to one of the streams flowing into the Chesapeake Bay. Volunteers will adopt a quarter-mile section of the stream and commit to cleaning it at least two times a year and surveying the condition of the stream.

Clear Creeks:
Our Water, Our Heritage, Our Pride
www.clearcreeks.org

Adopt-a-Creek Program

There are two levels of adoption. You may join at either level:

Creek Cleaner—Volunteers remove trash in and around their quarter-mile section of the adopted stream two to three times a year and report any stream hazards such as sewage leaks or illicit discharges.

Creek Walker—Volunteers fulfill the tasks of a Creek Cleaner, regularly walk their quarter-mile section of the adopted stream, and complete a survey twice a year to collect information on the health of the stream and stream bank (e.g., visible wildlife, erosion, trash, or other environmental concerns). This survey is done in conjunction with Project Clean Stream in the spring and Better Waterways in the fall.

Which Creeks Can I Adopt?

The Creeks that can be adopted in the Bird River Watershed are White Marsh Run, Honeygo Run, Windlass Run, and Bird River.

Bird River Watershed
Characterization
January 2014

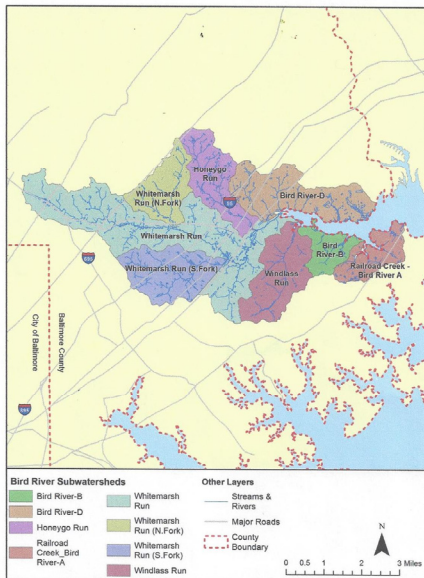


Figure 1-2: Bird River Subwatersheds

Frequently Asked Questions

Q: I want to help, but I don't know what a "stream hazard" or an "illicit discharge" looks like. Will you teach me?

A: Yes! We've put together a one-day training session that is designed to teach you what you need to know to adopt a creek. We will answer your questions, share best practices, and give you plenty of support and encouragement.

Q: I'd like to contribute as a Creek Walker, but I don't know about that twice-a-year survey. Is it complicated? Does it take a long time to fill out?

A: The survey is very simple, and we go over it at Adopt-a-Creek training. As a Creek Walker, you fill out the survey once at the beginning of your tenure to gauge the health of your section of the stream and then again at the end to see how much has changed.

Q: As a Creek Captain, may I invite family, friends, neighbors, and community groups to help me clean the creek?

Absolutely. You will be trained on how to safely lead volunteers in a community clean-up if you wish. And if you prefer to clean the creek alone or with just your family, that's okay, too.



Why Should I Get Involved?

- Make a difference by helping to restore our heritage of clean, safe, water for swimming and other recreation.
- Improve conditions for our proud local traditions of crabbing, fishing, and boating.
- Learn more about the creeks in your neighborhood and experience the beauty of our Chesapeake Bay.
- Become the eyes and ears of your local area in raising awareness of problems with local creeks with local government partners.
- Join your neighbors in getting a little exercise outdoors.

How Do I Sign Up?

1. Contact Peggy Perry or Chris Potts to attend a simple one-day training session designed to give you the basics on the Adopt-a-Creek program and answer your questions:

Peggy Perry
Clear Creeks Project Manager
pperry@gunpowderfalls.org

Chris Potts
Clear Creeks Assistant Project Manager
gvcchris@aol.com

2. Pick the creek(s) that you would like to adopt.
3. Choose whether you would like to contribute as a Creek Cleaner or a Creek Walker.
4. Ready, set, go! It's that simple!

For more information, visit the Clear Creeks website:
www.clearcreeks.org